

COVID-19 GUIDELINES FOR HGO WORKERS AND SITE VISITORS – JANUARY 2021

Coronavirus also known as COVID-19 was identified as being a potentially fatal virus in December 2019. This virus has now spread through the world and measures have been put in place by the World Health Organisation (WHO) to identify and reduce the risk of this virus. This guideline has been implemented by Hillgrove Resources in line with the advice of the WHO, Fair Work Australia, the Australian Government Department of Health, SA Health, Department of Energy and Mines SA, Australian Minerals Council and South Australian Chamber of Mines and Energy.

Coronavirus is transmitted through the droplets produced when a person coughs, sneezes or exhales. These droplets land on objects and surfaces and the virus is then transmitted when another person touches these surfaces and then touches their eyes, nose or mouth.

The best assurance against being infected with COVID-19 is through respiratory hygiene. HGO workers and all site visitors have the responsibility of maintaining their own health and hygiene. Listed below are accepted general preventative measures for good respiratory hygiene:

- Regularly and thoroughly clean your hands with an alcohol-based hand rub or wash them with soap and water.
- When coughing and sneezing cover mouth and nose with tissues and then dispose of these immediately in a lined bin, alternatively sneeze into the inside of your elbow.
- Thoroughly wash hands before and after each meal, preparation of food and drink and washroom visit.
- Maintain 2 square metres per person and 1.5 metres between people, wherever possible, in indoor areas.
- Avoid touching your eyes, nose and mouth.
- If you have a fever, cough and difficulty breathing, maintain quarantine measures and seek medical advice immediately.
- All persons who have been outside of Australia or have had close contact with persons who have been outside of Australia within in the last 14 days must observe the 14-day self-quarantine restrictions currently in place.
- All persons who are entering the state of South Australia from interstate must observe restrictions in line with SA Government policy at the time.

Specific preventative measures implemented by HGO in relation to and in addition to the above are listed below:

- If employees are requested to work from home, they will do so. This will primarily include administrative roles who are able to perform their duties remotely. HGO has remote access to the server via VPN.
- Consideration will be given to COVID-19 precautions in JHA's or SOP's for tasks performed in the field.
- Hands are to be cleaned thoroughly as per the guidelines and procedures posters in all washroom areas.
- All personnel utilising a common area for breaks, eating and preparing food have the responsibility to ensure all surfaces, utensils and equipment used have been thoroughly cleaned prior and after use.



- All visitors and HGO workers that are placed through the Alcohol testing regime at the gatehouse will be tested through the SD400 machine utilising the straw rather than the alcohol wand. When the wand is used in other areas personnel will not blow towards another person. The wand is to be cleaned down after use with wipes. Please note that to prevent a false positive, the wand will need to dry before further use.
- All visitors to site will be asked if they have travelled overseas or have been in contact with anyone that has travelled overseas within the last 14 days. If they have, they will be refused entry to site, unless the “Essential Traveller” exemption applies.
- Meal breaks within common areas may require staggering to reduce the number of persons within close contact and to maintain the 1.5 metre distance and the 2 square metre area per person indoor rule.
- Employees who are unwell should not attend work. If employees develop symptoms at work such as fever, cough, sore throat or shortness of breath they should seek medical advice.
- Employees, contractors and suppliers will continue to use swipe cards to access site or sign in at the gate. This will allow contact tracing to take place in the case of a positive COVID-19 case.

The responsibility of maintaining one’s health is upon the individual. Although Hillgrove Resources has implemented this guideline to encourage effective respiratory hygiene and to prevent the transmission of the coronavirus within the Hillgrove community, it is the individual that ensures the enforcement of this guideline. In the interest of public safety, Hillgrove encourages the individual to also adopt these measures outside of the workplace.

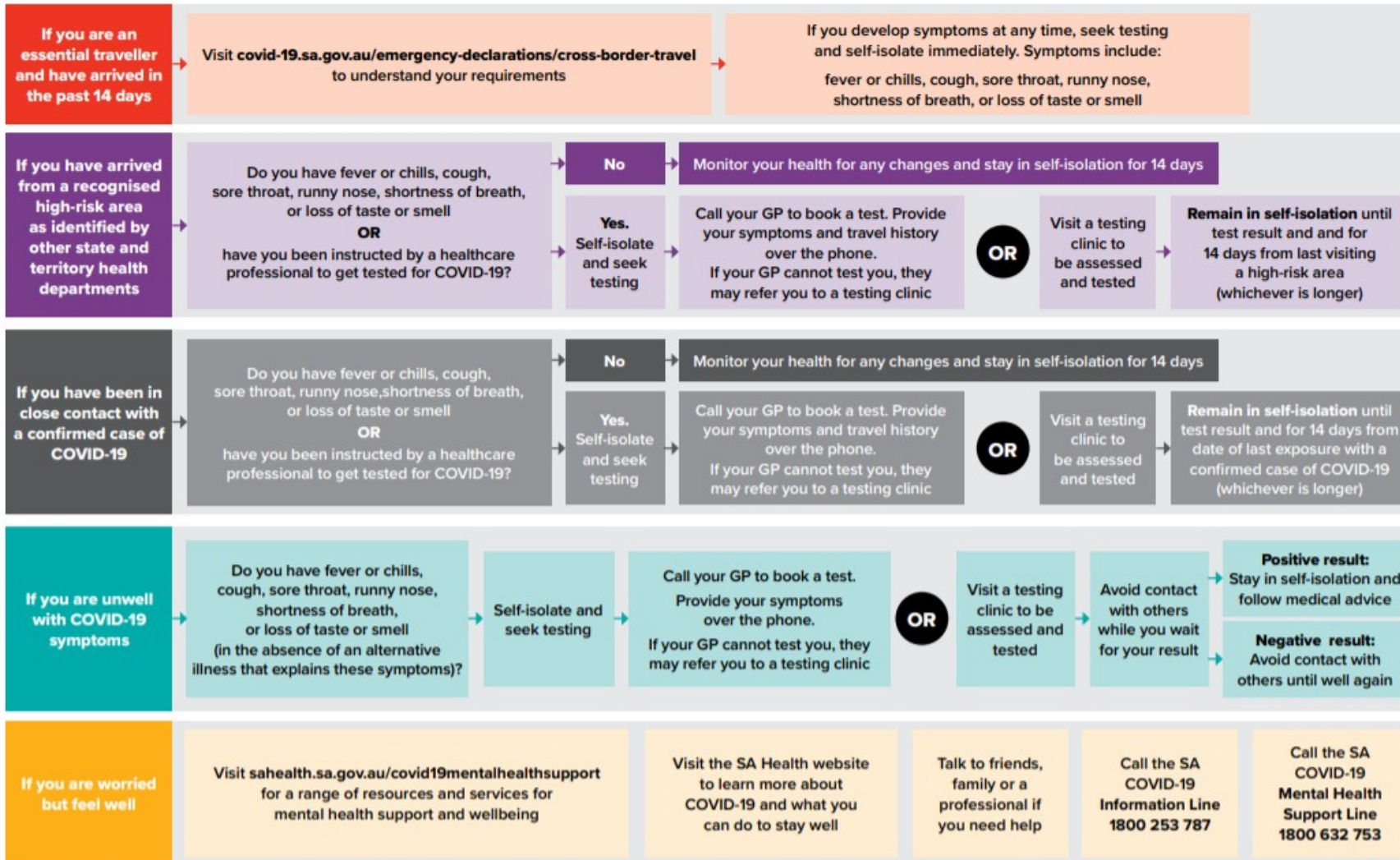
The attached flowsheet developed by SA Health provides simple directions on what you should do in various situations with regards to COVID-19. These guidelines will be updated as new information becomes available. Further information specific to the mining sector, including national protocols from the Minerals Council of Australia, is available at the following:

<https://www.sacome.org.au/covid-19.html>

http://www.energymining.sa.gov.au/coronavirus_covid-19

COVID-19 TESTING GUIDE

In a medical emergency, call triple zero (000) immediately.



Health Practitioners should refer to the latest COVID-19 CDNA National Guidelines for a comprehensive list of case definitions and sahealth.sa.gov.au/healthalerts

UPDATED 18 NOVEMBER 2020

sahealth.sa.gov.au/COVID2019



Government of South Australia
SA Health

RES-2002018



HILLGROVE COPPER PTY LIMITED A SUBSIDIARY OF HILLGROVE RESOURCES LIMITED ABN 43 105 074 762

Eclair Mine Road (cnr Back Callington Rd), Kanmantoo SA 5252, Australia T +61 8 8538 6800 F +61 8 8538 5255 www.hillgroveresources.com.au